

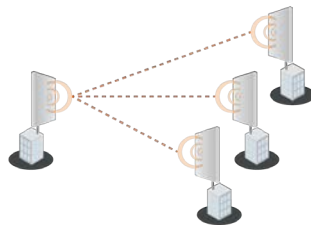
APC 2S-14 представляет собой 2.4 ГГц радиомаршрутизатор с высочайшей производительностью и гибкостью настроек, нацеленное в первую очередь на использование в качестве клиентского устройства в схемах "точка - много точек" и в соединениях "точка-точка", но может выступать и в роли точки доступа или повторителя. Имеет встроенный радиомодуль высокой мощности (31 дБм) и управляется многофункциональной операционной системой, которая позволяет в том числе и ограничивать скорость передачи данных для пользователей.

Всё это заключено в компактный корпус, защищённый по стандарту IP-6 5 и совмещённый с угловым отражателем среднего усиления, дающим в результате до 35 Вт ЭИИМ. В качестве сетевого режима может быть выбран Bridge или Router, а настроить радиоканал помогут встроенные утилиты (Site Survey, Antennat alignment, Delayed reboot, Spectrum analyzer). Дополнительного удобства добавляют дружелюбный интерфейс на базе технологии Adobe Flex и централизованная система управления WNMS.

Примеры использования

схема точка - много точек

Deliberant APC 2S-14 is an ideal device for point-to-multiple point applications as a short to medium range client device.



APC 2S-14 is a great device for short or medium range point-to-point applications.



Product/ distance recommendation	PTMP mode	PTP mode	PTP mode (full capacity)
APC 2S-14	10 km/ 6.21 mi	30 km/ 18.64 mi	4 km/ 2.49 mi

Wireless

WLAN standard	IEEE 802.11 b/g/n, iPoll proprietary
Radio mode	SiSo 1x1
Operating modes	Access point (auto WDS), Station, Station WDS, iPoll Access Point, iPoll Station
Radio frequency band	2.4 GHz
Transmit power	Up to 31 dBm (country dependent)
Receive sensitivity	Varying between -95 and -75 dBm depending on modulation
Channel size	20, 40 MHz
Modulation schemes	802.11 g/n: OFDM (64-QAM, 16-QAM, QPSK, BPSK) 802.11 b: DSS (CCK, DQPSK, DBPSK)
Data rates	802.11 n: 150, 135, 120, 90, 60, 30 Mbps 802.11 g: 54, 48, 36, 24, 18, 12, 9, 6 Mbps 802.11 b: 11, 5.5, 2, 1 Mbps
Error correction	FEC, Selective ARQ
Duplexing scheme	Time division duplex

Receive sensitivity (dBm)	802.11N/iPoll	15 Mbps	30 Mbps	45 Mbps	60 Mbps	90 Mbps	120 Mbps	135 Mbps	150 Mbps
		-94	-91	-89	-86	-83	-78	-77	-75
802.11g	6 Mbps	9 Mbps	12 Mbps	18 Mbps	24 Mbps	36 Mbps	48 Mbps	54 Mbps	
	-95	-94	-92	-90	-88	-84	-80	-78	
802.11b	1 Mbps	2 Mbps	5.5 Mbps	11 Mbps	-	-	-	-	
	-95	-95	-95	-93	-	-	-	-	

Output power (dBm)	802.11N/iPoll	15 Mbps	30 Mbps	45 Mbps	60 Mbps	90 Mbps	120 Mbps	135 Mbps	150 Mbps
		30	30	30	30	28	28	28	26
802.11g	6 Mbps	9 Mbps	12 Mbps	18 Mbps	24 Mbps	36 Mbps	48 Mbps	54 Mbps	
	31	31	31	31	31	31	29	29	
802.11b	1 Mbps	2 Mbps	5.5 Mbps	11 Mbps	-	-	-	-	
	27	27	27	27	-	-	-	-	

Antenna

Type	Integrated directional or sector antenna
Gain	14 dBi (directional) single polarized or 10 dBi (sector) single polarized

Wired

Interface	10/100 Base-T, RJ45
-----------	---------------------

Networking

Operating modes	Bridge, Router
WAN	Static IP, DHCP client, PPPoE client
NAT	Routing w/ or w/o NAT
Static routing	Supported
DHCP	Client, Server, Relay
Port forwarding	Supported
VLAN	Supported for management and data

Software

General	Ability to define/limit frequency, channel width, EIRP, modulation
Advanced wireless functionality	ATPC (automatic transmit power control), auto-channel, auto-modulation,
Operating mode	Router, Bridge
Wireless operating modes	AP auto WDS, Station, Station WDS, Virtual radios (VSSID), iPoll access point, iPoll client
Wireless security	WPA/WPA2 Personal, WPA/WPA2 Enterprise, WACL, User isolation, UAM (web portal authentication)
Wireless QoS	WMM
WAN protocols	Static IP, DHCP client, PPPoE client
Network	NAT, static routing, firewall, port forwarding, VLAN, traffic shaping
Services	DHCP server, SNMP server, NTP client, Alerts, Remote syslog, Wireless and Ethernet statistics, bandwidth limiting
Management	HTTP(S) GUI, SSH CLI, SNMP read, WNMS, troubleshooting file, reset via reset tool
Tools	Site survey, Link test, Antenna alignment, Ping, Traceroute, Spectrum analyzer, delayed reboot

Physical

Dimensions	Length 248 mm (9.76 "), width 211 mm (8.3 "), height 100 mm (3.9 ")
Weight	500 g (17.6 oz)
Power supply	12 - 24 V DC passive PoE
Power source	100 – 240 VAC via included adapter
Power consumption	4.5 W

Environmental

Operating temperature	-40°C (-22 F) ~ +65°C (+149 F)
Humidity	0 ~ 90 % (non-condensing)

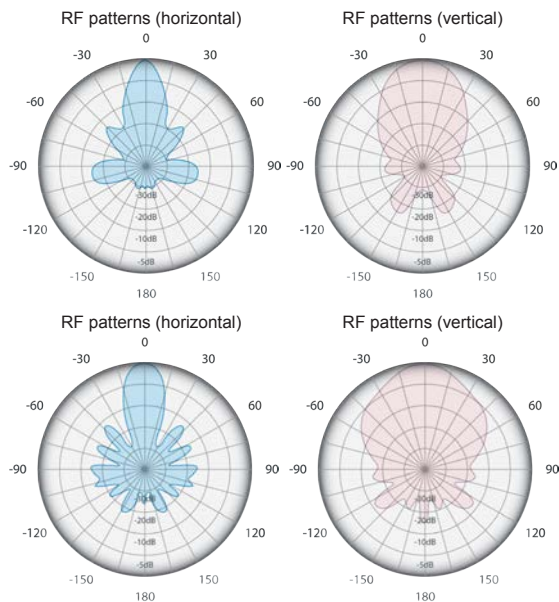
Management

System configuration	User-friendly web GUI, Command line via SSH, centralized Wireless Network Management System, reset via reset tool
System monitoring	SNMP v1/2c/3 server, Syslogs, system alerts via e-mail and SNMP trap

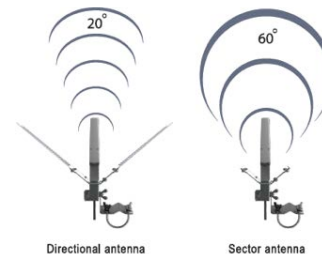
Regulatory

Certification	FCC/CE/ Safety/ RoHS compliance
---------------	---------------------------------

Antenna specifications



Frequency range	2.4 - 2.5 GHz
Gain (reflector/ no reflector)	14 dBi/ 10 dBi
Polarization	Dual linear
Cross-pol Isolation	40 dBi minimum
Max VSWR	1.8:1
Beamwidth with reflector	20 deg
Beamwidth without reflector	54 deg
Elevation Beamwidth	50 deg





www.deliberant.com

Copyright © 2012 Deliberant LLC. All rights reserved. Deliberant, the Deliberant logo, are trademarks of Deliberant LLC. All other company and product names may be trademarks of their respective companies. While every effort is made to ensure the information given is accurate, Deliberant does not accept liability for any errors or mistakes which may arise. Specifications and other information in this document may be subject to change without notice.



To learn more about Deliberant products, visit www.deliberant.com.